



## Chasing the Saw

*Follow Brad Lemmon's  
research into the logging  
camps of Central Oregon*

*See page 2*

## Giving The Gift of History

*How to include local history  
in your holiday giving*

*See pages 3 and 6*



# The Homesteader

Deschutes County Historical Society Newsletter—DECEMBER 2025

## Holiday Gelatin Salad Show

Does your family have a weird  
holiday gelatin salad? Let your freak  
holiday salad SHINE at the  
**HOLIDAY GELATIN SALAD SHOW!**

Enter a salad in one of four different  
categories:

**Best Presentation** — Knock our socks  
off with a molded creation Grandma  
would be proud of!

**Most Savory** — Gelatin isn't just for  
dessert!

**Your Family's Salad Recipe** — Let's  
face it, there is always that one salad  
that has to be at every family holiday.  
(bonus points if you have a family  
photo with the salad in it!)

**Nailed It! Best Ooops, You Tried** —  
But we don't care! You gave it your  
best and we still want to see it.

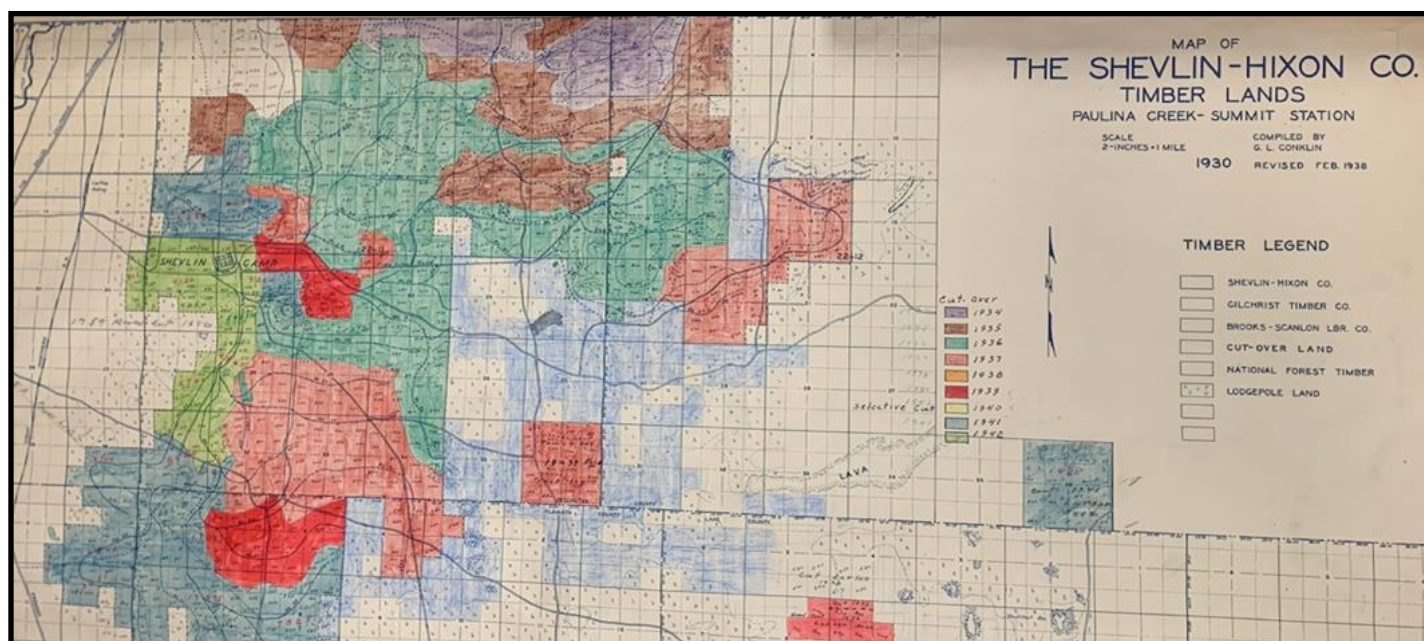


**Saturday, December 13 1:00 p.m.**

*For more information visit [deschuteshistory.org](http://deschuteshistory.org)*

# Exactly When and Where Did Brooks-Scanlon and Shevlin-Hixon Cut Lumber?

By Brad Lemmon



*Shevlin-Hixon cuttings 1934-1942 east of La Pine*

*Author's Note: I've been working on this research project for 16 months and I'm not finished yet, so this article mostly discusses the research process and not the final results.*

I've lived in Bend for 18 years. For the first 13 years, I slowly, mostly unintentionally, absorbed the basics of the local lumber industry history. Over the last five years, volunteering at the museum has accelerated my learning – there's nothing quite like looking at photographs of logging trains on giant railroad trestles or horse-drawn high wheels dragging logs to pique one's interest. Eventually I started finding myself in the forest thinking: "I wonder what year the trees here were first chopped down and which company did the cutting?" So, in the summer of 2024, I decided to see if anyone had already compiled a comprehensive answer to that question. I like to hand-draw maps, so I was almost hoping there *wouldn't* be a map that already provided the information.

To start, I looked at about 35 maps in the museum's Brooks-Scanlon & Shevlin-Hixon drawer and queried the museum's PastPerfect database. I couldn't find a single map or set of

data that answered my research question. At that point, I enlisted my friends John Frye, John Kent, and Mike Berry to help me collect information.

The museum's maps did provide *partial* answers. DCHS owns a fantastic circa 1930 timber map. The base map is a huge 8' x 5' 1921 version of Robert Gould's "The Deschutes Valley Central Oregon" (see a photo of Collections Manager Rebekah Averette standing next to it in Mike Berry's March 2023 *Homesteader* article). It uses color-coding to show the holdings of Shevlin-Hixon, Brooks-Scanlon, Gilchrist, Hill, Johnson-Gilchrist, Weyerhaeuser, Dant & Russell, Olean, Thorpe, Shaw-Bertram, Pelican Bay, Oregon & Western, Lamm, Favell-Utley, Hovey, Day Brothers, and Warren companies. This map went a long way toward knowing *who* cut timber in a specific place, but not *when*, because it only indicated what had and hadn't been cut by 1930. The museum's holdings also include five Shevlin-Hixon maps that show cuttings in specific years from the late 1920s until the early 1940s. These appear to have

- Continued on page 4

## Deschutes Historical Museum

129 NW Idaho Avenue  
Bend, OR 97703

Open Tuesdays-Saturdays  
10:00 a.m. to 4:30 p.m.  
541.389.1813

[www.deschuteshistory.org](http://www.deschuteshistory.org)  
[info@deschuteshistory.org](mailto:info@deschuteshistory.org)

### Museum Staff:

Kelly Cannon-Miller, Executive Director  
Vanessa Ivey, Museum Manager  
Rebekah Averette, Collections Manager  
Donna Burklo, Development Director  
Tracy Alexander, Membership Officer  
Rashelle Maplethorpe, Support Staff



### 2025 DCHS Board of Directors:

Jane Williamson, President  
Karen Green, Vice President  
Heidi Kennedy, Secretary/Treasurer  
Adrian Bennett, Past President

### Board Members:

Paul Claeysens, Tony DeBone,  
Greg Fulton, Eric King,  
Brad Lemmon, Julie Lowy,  
Liz Rink, Glenn Voelz,  
Deb Zitella



Complete minutes of the meetings of the Board of Directors are on file with the Museum office.  
Tax ID# 51-0186079



## A Message from Executive Director Kelly Cannon-Miller

This past year has been a remarkable one thanks to you, our supporters and friends who agree that the history of Central Oregon matters. Together, we have accomplished so much:

**Enriched young minds** by partnering with OSU Cascades to develop new curriculum based in local history for middle and high school students

**Celebrated Central Oregon's diverse history** by partnering with Allyship in Action to honor the histories of the Bend Colored Men's Club and the Braceros community.

**Inspired the next generation** by awarding two Leon Devereaux Pioneer Scholarships to local graduates.

**Made history more accessible** by upgrading our collections database to the cloud for easier online research.

With your continued support, we can do even more in 2026. Your gift will allow us to:

**Share history** in new ways with dynamic exhibits from our collections.

**Reach more students** with affordable school field trips and off-site visits.

**Create cherished memories** at events like the Archaeology Roadshow and the Antique Fair.

**Enhance public spaces** by collaborating with partners like the Bureau of Land Management and Bend Park & Recreation District.

*"As a professional storyteller, I believe very much in the transformational power of connecting with our history. The Deschutes County Historical Society's passion for preserving our heritage and helping us prepare for the future by learning from the past is foundational."*

*-- Scott Elnes, Central Oregon Daily News*

The need for historical accuracy, preservation, and education has never been more important, and it comes at a time when the elimination of funding sources makes non-profit fundraising even more competitive and challenging than ever before. Support from you, our members and supporters, is crucial to keeping our shared history alive!

With gratitude,



### DESCHUTES COUNTY HISTORICAL SOCIETY ANNUAL GIVING FUND

**YES!** I want to help DCHS keep history alive!

Enclosed is my gift of:

☐ \$25    ☐ \$50    ☐ \$100    ☐ Other \$\_\_\_\_\_

Name: \_\_\_\_\_

Address: \_\_\_\_\_

City: \_\_\_\_\_ State: \_\_\_\_\_ Zip: \_\_\_\_\_

Phone: (\_\_\_\_\_) \_\_\_\_\_ E-mail: \_\_\_\_\_

**THANK YOU**

Please return this form with your payment.  
Make checks payable to:

Deschutes County Historical Society  
129 NW Idaho Avenue  
Bend, OR 97703  
541-389-1813

Your gift is tax-deductible to the fullest amount allowed by law. Our tax ID: 51-0186079

Or pay online via our  
secure website:  
[www.deschuteshistory.org](http://www.deschuteshistory.org)



<b>For DCHS use:</b>
Date: _____
Receipt #: _____
Initials: _____



## Continued from page 2— Where lumber companies operated

been created by George Conklin, who was a timber cruiser for Shevlin-Hixon (and then for Brooks-Scanlon after they bought out Shevlin-Hixon). Conklin's daughter Ruth donated these maps to the museum in 2004.

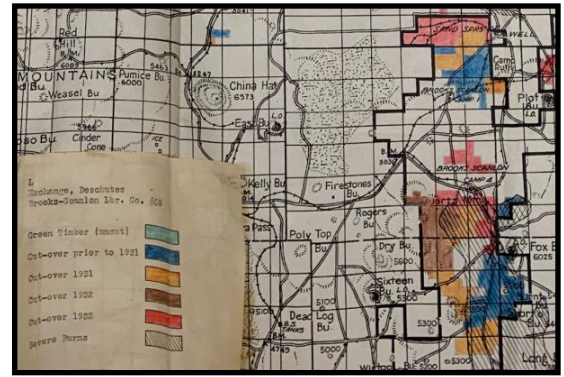
Next, I spent some time researching the fifteen smaller companies listed above and found very little information. So, I decided to limit my scope to just Brooks-Scanlon and Shevlin-Hixon (they performed a large majority of the overall cutting in Central Oregon).

Brooks-Scanlon and Shevlin-Hixon opened their Bend mills on opposite sides of the Deschutes River in 1916. Both companies started harvesting trees near Bend. Brooks-Scanlon cut their way southeast past China Hat into 50 square miles of northern Lake County. After they exhausted their land in that direction, they came back to Bend and started cutting their way northwest past Sisters and Three Creek Butte and into southern Jefferson County. Shevlin-Hixon cut its way south from Bend on the west side of the Deschutes River about 40 miles into northern Klamath and Lake counties (until 1950 when Brooks-Scanlon bought them). Both companies used multiple camps of men in the woods and brought the lumber back to Bend on their own railroads. In the late 1950s Brooks-Scanlon switched from rails to trucks driving on private haul roads.

My next research step was to contact Caleb Hennekey, a Deschutes National Forest archaeologist. He allowed me to look through an extensive set of maps and documents at the Bend office. The Forest Service had some Brooks-Scanlon maps that showed specific cuttings, mostly covering the 1930s (upper right). These maps were a great complement to the museum's Shevlin-Hixon maps, but I still needed information from the early years and the later years. I realized I was going to have to find the missing information *indirectly* by studying when and where the lumber camps were located, and when and where the railroads were built.

To figure out how far the rails reached in a given year, I started with COCC library's set of 1924, 1928, 1931, 1936, 1938, 1940, and 1947 Deschutes National Forest maps (middle right). These showed the Brooks-Scanlon and Shevlin-Hixon's main rail lines. A large amount of the current footprint of Deschutes National Forest was originally owned by Brooks-Scanlon and Shevlin-Hixon. Over the years the two companies would sell or trade cut-over property to the Forest Service for the right to take trees from uncut Forest Service land. Another fantastic resource was an extensive map that Forest Service employee Bob Jensen created of the entire lumber railroad network. He accomplished this in 1988 using 1943 Army Air Corps photographs (below left). An unknown forest service employee after Bob annotated his map with notes like "end of grading 1924." I met with Bob and he gave me a complete set of the aerial photographs. The 1937 and 1944 Metsker Company Deschutes County maps (large-scale) were useful and the Western History Room in Burns, Oregon had a useful (small-scale) Metsker map of Central Oregon. Finally, historic USGS quad maps (1:24000 scale) almost always contain useful information (below right).

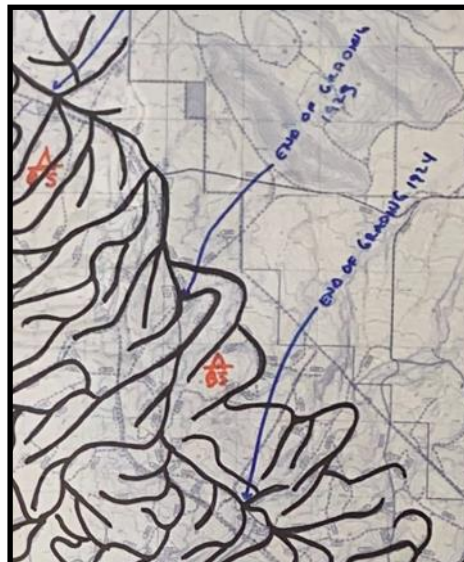
To create a list of lumber camp locations and their years of existence, I used quite a few resources. John Frye had a list of 19 camps from previous research and he had a George Conklin 1953 chronology of the official "Shevlin" Post Office site which was always located in one of their camps. I looked through every page of the Brooks-Scanlon *Pine Echoes* and Shevlin-Hixon *Equalizer*



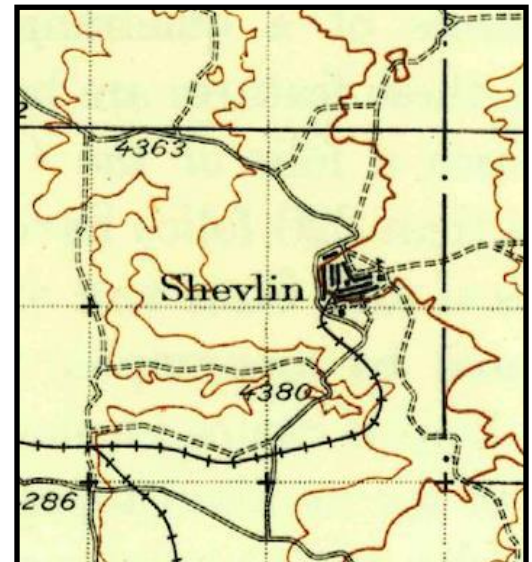
Brooks-Scanlon cuttings east of China Hat 1931-1933



Deschutes National Forest map showing the end of the Shevlin-Hixon rails near the Vandeventer Ranch near present-day Sunriver



Brooks-Scanlon railroad network and ends of main line in 1923 and 1924. This area is south of Horse Ridge.



1935 United States Geological Survey map showing Shevlin-Hixon Cliff Camp east of Highway 97 between Sunriver and La Pine

- Continued on page 5



#### ***Continued from page 4— Where lumber companies operated***

monthly news magazines owned by the museum. Unfortunately, they usually referred to the camps by number and assumed the reader knew where each numbered camp was located. Ronald Gregory's 1997 thesis paper, "Life in Railroad Logging Camps of the Shevlin-Hixon Company 1916-1950" mapped fifteen Shevlin-Hixon camps. Jack Bowden's 2003 book "Railroad Logging in the Klamath Country" mapped ten camps. Alice Nelson Bishop's memoir "Brooks-Scanlon Logging Camps 1919-1926" mentioned Brooks-Scanlon camps near Bessie, Lava, and Luna Buttes. Multiple camps for both companies were listed in the 1920, 1930, and 1940 census records - sometimes with fairly precise locations noted. Oregon Institute of Technology had three 1920s Shevlin-Hixon rail line maps that showed the exact location of a few camps. A map created by Forest Service worker Charles Bigelow contained 13 Shevlin-Hixon camps. (this map was donated to the museum in 1995). I eventually identified 47 likely Brooks-Scanlon and Shevlin-Hixon camps. At that point I decided to try to visit and/or verify every one of them, which is why this became such a long-term project. To prepare for each camp search, I look at maps, LIDAR, and the 1943 aerial photographs.

The combination of the three views provides very useful clues on exactly where to look for evidence of the camp's existence. The most common things to find are rusted cans and glass, but I have also found shoes, stoves, clocks, railroad brakes, car parts, saw blades, skillets, mattress springs, and wash basins. Many camps still contain some sawn boards with nails in them, likely from root cellars, that haven't completely rotted away. Unfortunately, for dating purposes, the vast majority of the labels on cans are rusted beyond recognition and almost all the glassware is in shards. I have found two automobile license plates with clearly readable dates. While in the field, I use the Avenza map app on my phone, so I can see exactly where I am on a base map. Before I got this app, I used to worry a lot more about getting lost in the woods, because I quite often wander a long way from roads and trails. John K., Mike B., John F., my wife, daughters, and another friend



***1943 US Army Air Corps Aerial Photo Showing Brooks-Scanlon Bull Springs Camp (near the failed Tumalo Reservoir)***



***Can dump at Shevlin-Hixon Long Garage Camp – likely occupied in the late teens or early twenties. This camp is along Conklin Road.***

have been my camp search companions. I've found solid evidence at 30 camps and have seven left to visit. Four of them are in the current Forest Service China Hat Road closure area. I'll eventually give a copy of all my information including maps, precise camp locations, and photographs, to the museum and the Forest Service. Next year I hope to complete my own map showing what year the trees were first cut down in a given location.

#### **Remaining Research Questions:**

- 1) Exactly what did Brooks-Scanlon cut down after 1950 on land they did and didn't own?
- 2) What was the location of a 1926 Shevlin-Hixon camp named "Rock Crusher"?

Please contact me if you know anything about these.

## **Tributes**

***Ralph C. Curtis***

**Jean Rotter**

***Marsha Stout***

**Mel Stout**



***A DCHS Membership makes a great gift for long-time Central Oregonians and newcomers alike!***

With benefits like free museum admission, discounts in the DHM Gift Shop, and free guided tours, not to mention the monthly *Homesteader* newsletter, the gift of membership is a perfect fit.

During the month of December when you join the Deschutes County Historical Society at the Household level or higher, ***get a free Household membership to gift to family and friends.***

Already a member? Upgrade to a Sustaining Circle membership at \$5 per month or higher and **receive a regular Household Membership to gift.**

Joining is easy online, and every new membership or new sustaining circle membership will receive a gift membership in the mail for your gift recipient.

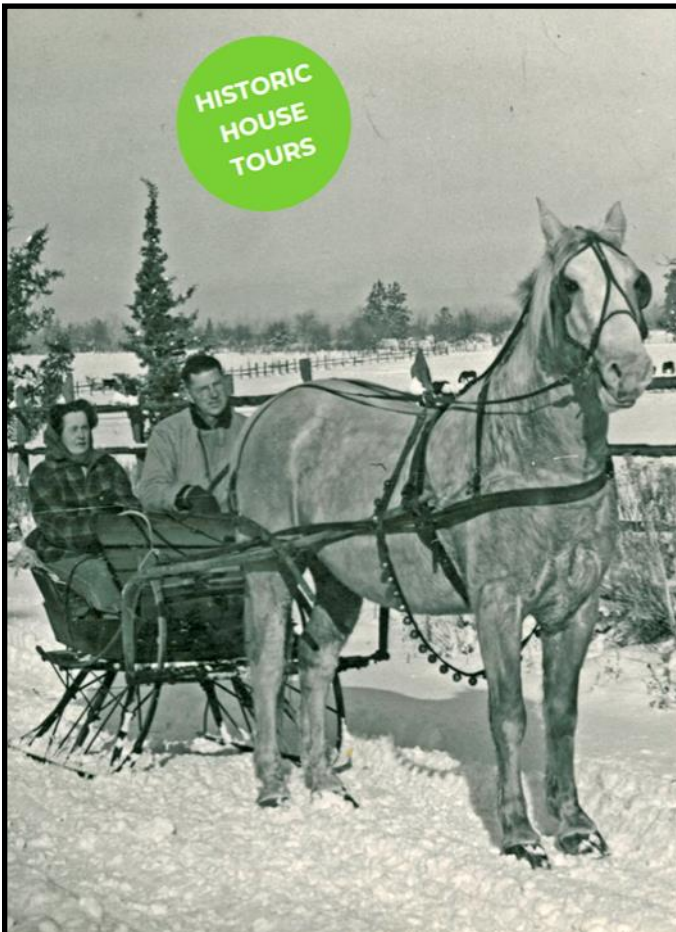
**Contact the Deschutes Historical Museum for information: (541) 389-1813 or [info@deschuteshistory.org](mailto:info@deschuteshistory.org)**

**Carrying on the Long History of Helping Feed Those in Need**



***In the fall of 1922, school superintendent G.W. Ager led city students in a food drive to help provide famine relief in Armenia during the Armenian Genocide. In this photo, school children proudly hold up cans they have collected.***

Join the museum and our partners at [Today's Country KSJJ 102.9](https://www.kjjz.com/story/1029) to make sure no one in our community is going hungry. Donate non perishable food items at the Deschutes Historical Museum to support the work of [NeighborImpact](https://neighborimpact.org/) now through December 19.



**an old fashioned holiday**

**Hollinshead-Matson Homestead Museum**

**Holiday Open House & Historical Tour**

**Sat. - December 13  
10 am - 1 pm  
Hollinshead Park  
1235 Jones Rd, Bend**



**Free tour and holiday treats.**

[bendparksandrec.org](https://bendparksandrec.org)  
Call (541) 389-7275



*play for life*

# THANK YOU CHILI FEED VOLUNTEERS!

*The Board and Staff of the Deschutes County Historical Society would like to take this opportunity to thank everyone who made the 42<sup>nd</sup> Annual Chili Feed and Raffle a successful event! The joy in seeing so many returning friends and new ones make this a truly beloved event. To the pie donors, servers, bussers, dishwashers and cooks, raffle donors, piano players, and all the volunteers, **THANK YOU!***

Lorlee Ackerman	Carla Hunt	Joan Reckwerdt
Janet Alexander	Vanessa Ivey	Liz Rink
Tracy Alexander	Heidi Kennedy	Katie Rixe
Jerrie Allison-Melton	Joyce Kesterson	Kathy Rood
Rebekah Averette-Zaback	Harriet Langmas	Caroline Russell
Ed Barnum	Sara Langton	Peggy Shaver
Adrian Bennett	Lisa Lee	Jon and Nanette Sholes
Mary Berrigan	Brad Lemmon	Paula Simila
Donna Burklo	Staci Louie	Jackie Souza
Jon Cain	Julie Lowy	Don Stelma
Karen Caine-Nielsen	Becky Mackel	Tom and Juanita Thompson
Kelly Cannon-Miller	Rashelle Maplethorpe	Marge Trayser
Susan Cline	Cindy McCabe	Glenn Voelz
Jai Darnell	Greg McCarthy	Cher Wagner
Tina Demelo	Ashley Neal	Nanda Webb
Deedee Garnett	Linda O'Donnell	Jane Williamson
Nunzie Gould	Donna Owens	Ryan Winters
Susie Hart	Michelle Patrick	Deb Zitella

**Chili Feed:** Larkspur Community Center ☯ Mike Penhollow ☯ Strictly Organic Coffee

**Raffle Items:** (541) Trends ☯ The Antique Fair Vendors ☯ Adrian Bennett ☯ DCHS Board Members ☯ Deschutes Public Library ☯ Deedee Garnett ☯ The Greenhouse Cabaret ☯ Dudley's Bookstore ☯ Dutch Bros Coffee ☯ Dave Howe ☯ Local Acres Marketplace ☯ Harriet Langmas ☯ Mt. Bachelor Quilt Guild ☯ Mt. Bachelor Resort ☯ Newport Market ☯ The Old Mill District ☯ Oregon Feed and Irrigation ☯ The Pine Tavern ☯ Pizza Mondo ☯ Savory Spice ☯ Isabelle Singer ☯ Barbara Smiley ☯ Steve Stenkamp ☯ The Tower Theatre Foundation ☯ Trader Joe's ☯ Glenn Voelz ☯ Wanderlust Tours ☯ Wild Birds Unlimited ☯ Deb Zitella



# Member Holiday Discount

20% off

Take 20% off one (1) regular priced item in the Deschutes Historical Museum Gift Shop.

Not valid online or with any other discounts. Special photo orders not included. Must present coupon at time of purchase. One coupon per customer.

Good through 12/31/2025

## Volunteer Meeting: Museum Updates and Front Desk Training

Tuesday, December 9 1:00 p.m.

As the year comes to a close, we have lots of new updates to share with our volunteers! From new exhibits to staff announcements, not to mention areas that need volunteer help. Plus, December is a busy time at DHM with an uptick in winter break visitors, holiday shoppers will be taking advantage of our 20% off coupon, buying gift memberships to share, and making their year-end donations.

Bring a sack lunch to enjoy while Museum Manager Vanessa Ivey reviews all the news and the procedures for documenting donations, adding discounts and coupons to sales, selling gift memberships, and trouble-shooting issues with the point-of-sale.

Meeting will take place at the Deschutes Historical Museum research library.

## Mark Your Calendars

### DECEMBER

**9 VOLUNTEER MEETING: Front Desk Information**  
1:00 p.m. Deschutes Historical Museum

**13 DESCHUTES COUNTY'S 109<sup>th</sup> BIRTHDAY**

#### HOLLINSHEAD OPEN HOUSE

10:00 a.m.—2:00 p.m. 1235 NE Jones Rd.

#### HOLIDAY GELATIN SALAD SHOW

1:00 p.m. Deschutes Historical Museum

*Check-in for salads begins at 12:00 p.m., judging at 1:00 p.m.*

**24 & 25 CHRISTMAS HOLIDAY : MUSEUM CLOSED**

**31 & JANUARY 1 NEW YEAR'S EVE HOLIDAY: MUSEUM CLOSED**

